



JETRO COCKPIT4[®]
for Application Delivery & Secure Browsing

ActiveX Control

www.jetroplatforms.com

Version 4.1.0.17

Important Notice

Jetro Platforms reserves the right to make corrections, modifications, enhancements, improvements, and other changes to its products and services at any time and to discontinue any product or service without notice. Customers should obtain the latest relevant information before placing orders and should verify that such information is current and complete. All products are sold subject to Jetro Platforms's terms and conditions of sale supplied at the time of order acknowledgment.

Jetro Platforms warrants performance of its products to the specifications applicable at the time of sale in accordance with Jetro Platforms's standard warranty. Testing and other quality control techniques are used to the extent Jetro Platforms deems necessary to support this warranty. Except where mandated by government requirements, testing of all parameters of each product is not necessarily performed.

Jetro Platforms assumes no liability for applications assistance or customer product design. Customers are responsible for their products and applications using Jetro Platforms components. To minimize the risks associated with customer products and applications, customers should provide adequate design and operating safeguards.

Jetro Platforms does not warrant or represent that any license, either express or implied, is granted under any Jetro Platforms patent right, copyright, mask work right, or other Jetro Platforms intellectual property right relating to any combination, machine, or process in which Jetro Platforms products or services are used. Information published by Jetro Platforms regarding third-party products or services does not constitute a license from Jetro Platforms to use such products or services or a warranty or endorsement thereof. Use of such information may require a license from a third party under the patents or other intellectual property of the third party, or a license from Jetro Platforms under the patents or other intellectual property of Jetro Platforms.

Resale of Jetro Platforms products or services with statements different from or beyond the parameters stated by Jetro Platforms for that product or service voids all express and any implied warranties for the associated Jetro Platforms product or service and is an unfair and deceptive business practice. Jetro Platforms is not responsible or liable for any such statements.

All company and brand products and service names are trademarks or registered trademarks of their respective holders.

Part number: 1004, March 2010

Abstract:

The cockpit 4 ActiveX control is packaged as a cab file that can be embedded in a simple html page. In the html page you create an object and run a simple java script that receives a configuration file and a connect command.

Html follows:

```
<object id="Cockpit4Mgr" classid="CLSID:E03C09F8-D005-4AFB-8211-1FB2FA5FC8CF"
codebase="JDsActiveX.cab#version=4,1,0,17">
</object>
<script type="text/javascript">
    Cockpit4Mgr.PackageURL = "http://COCKPIT-4-TS01/cockpit/ClientConfig.xml";
    Cockpit4Mgr.Connect();
</script>
```

The ActiveX will run a custom command (if specified) and launch the client, If the client is not installed the ActiveX will install a client and launch it.

You can specify the following settings in the client config file

- Connection settings
 - Cockpit controller
 - Connection port
 - Secure connector
- Install file location
- Install file type MSI or ZIP
 - If zip file – then you can specify custom command to run after the zip file is downloaded, this can be a local command or a script contained within the zip file
- Pre-launch command
 - Run the pre-launch command synchronous or asynchronous
 - Check return code or ignore
 - If check return code is enabled, then you can specify a custom message for non zero return code.

Concepts:

The html ActiveX and client installation file can be hosted on any web server and secured with ssl or other methods.

The ActiveX will install, configure and launch the cockpit client in your LAN or for remote users

The installation of the ActiveX requires administrative rights on the pc. You can use the ActiveX installation to simply deliver COCKPIT client as an msi package or create your own msi package and add files and settings you want. Using the ZIP file and custom command installation you can package multiple msi files to install or remove old clients.

Following is an example script:

```
Msiexec /X {E5B077A2-40DF-4D80-B6B7-275D0AB97480} /passive
"%temp%\WindowsXP-KB884020-x86-enu.exe /passive
Msiexec /I "%temp%\COCKPIT4-Client.msi /passive
"%temp%\WindowsXP-KB969084-x86-enu.exe"
Regsvr32 /s C:\windows\System32\mstscax.dll
```

The above sample will:

1. remove cockpit 3.x client
2. install kb 884020
3. Install cockpit 4 client
4. Install kb 969084 (rdp 7)
5. And verify that mstscax.dll is registered

Or customize the COCKPIT Client installation, for example

```
Msiexec /I "%temp%\COCKPIT4-Client.msi COCKPITSERVER1="cpt01" /passive
```

This will change the default cockpit server from COCKPITSERVER1 to cpt01

```
Msiexec /I "%temp%\COCKPIT4-Client.msi COCKPITSERVER1="cpt01:14041" /passive
```

This will change the default cockpit server from COCKPITSERVER1 to cpt01 and the default port for this connection to 14041

```
Msiexec /I "%temp%\COCKPIT4-Client.msi COCKPITSERVER1="cpt01:14041/s"
/passive
```

This will change the default cockpit server from COCKPITSERVER1 to cpt01, the default port for this connection to 14041 and the connection type to secure connector

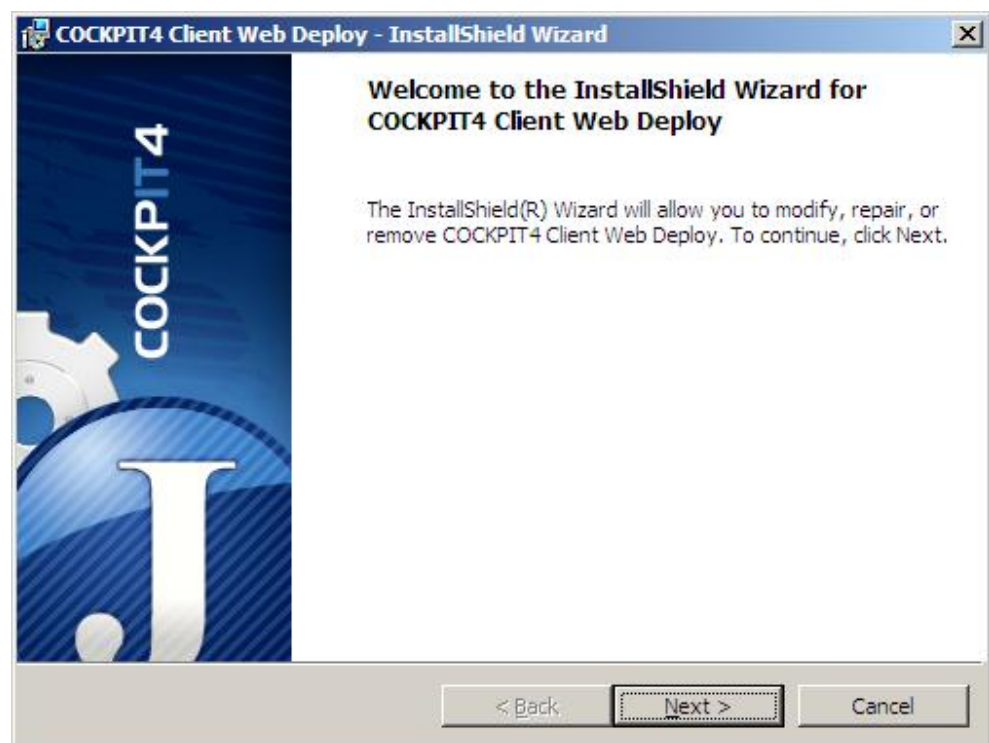
The above changes affect the ClientConfig.xml in the bin folder of the program files which is used if a user has no ClientConfig.xml file in his %appdata% folder, you can also specify a COCKPITSERVER2 entry. You can have the first point to the LAN and the second to the secure connector.

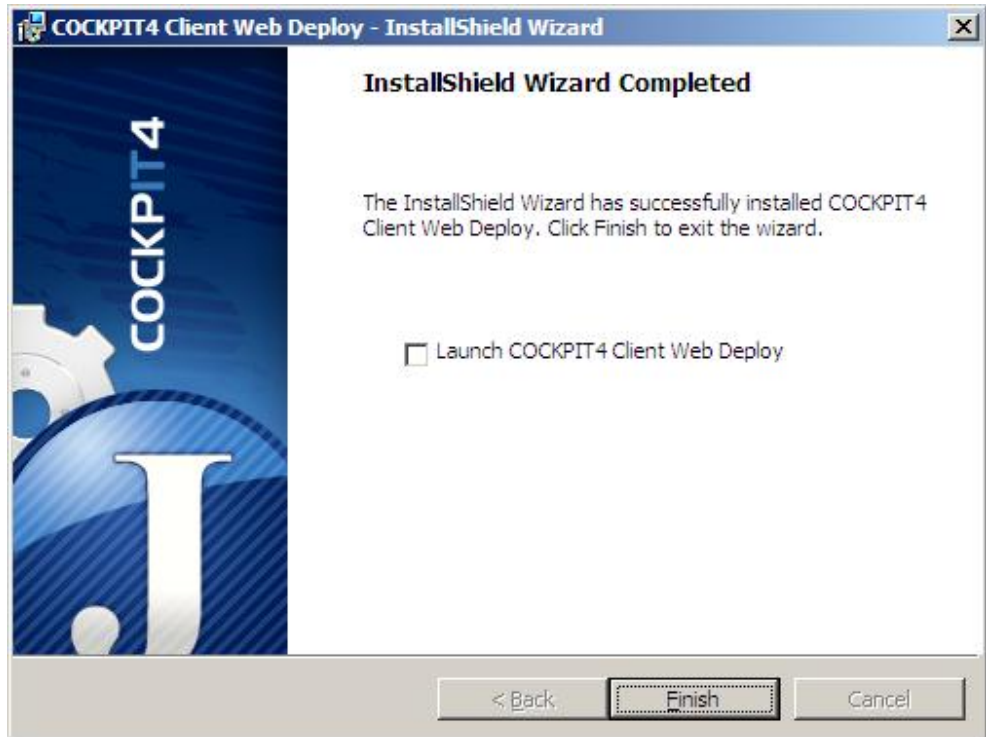
COCKPIT Client Web deploy install guide

System Requirements:

- Hardware
 - 10 mb of free disk space
- Software
 - Windows 2003 or 2008
 - .net 2 installed
 - Internet information server (IIS)

Install the software package, follow the installation wizard.





When finished launch Client Web Deploy Admin from the start menu.

You get the default screens were you can set the options specified above.

